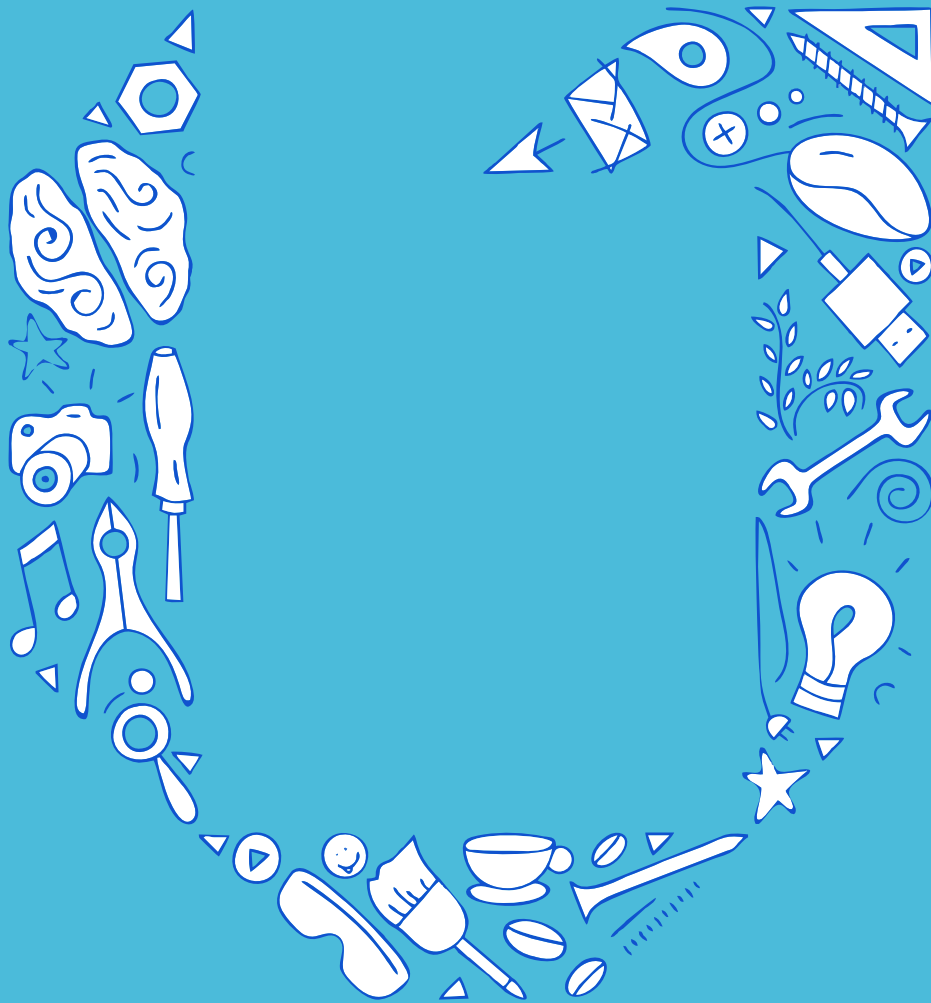


2024/2025



# INFORMATION

FOR NEW FULL TIME STUDENTS

Welcome to Vilnius Gediminas Technical University (VILNIUS TECH)!

We're thrilled to greet the upcoming MAKERS from across the globe for your upcoming studies.

We anticipate that your journey with us will be enriching, and we look forward to you becoming an esteemed member of our university community.

Congratulations on submitting your application and receiving acceptance to VILNIUS TECH.

The following details will assist you in preparing for your upcoming journey to Vilnius and your studies at VILNIUS TECH.

We can't wait to see you soon!

Team of International Studies Centre



# BEFORE COMING TO LITHUANIA

## START OF ACADEMIC YEAR 2024/2025

New academic year will start from **2nd of September**, 2024 and all the lectures will be held live at the **VILNIUS TECH** campus.

## ORIENTATION DAYS for international students

To help you navigate the university and the city of Vilnius, our team and mentors will organize a special event for new incoming international students at the **end of August** 2024. The exact date and full program details of this event will be sent to your email before your arrival (in August). **Plan your trip to Vilnius** to be here on time — you can arrive any day from the middle of August until September.

## DON'T FORGET TO LEGALIZE your documents

Legalization is necessary to allow documents issued in one country to be accepted and used by institutions of other countries. Documents must be legalized with an **Apostille** OR **double legalized** in the Ministry of Foreign affairs: for a Bachelor degree students - High school graduation certificate and transcript; for a Master degree students - Bachelor's degree certificate and transcript. Check for more information

[https://bit.ly/VILNIUSTECH\\_documents\\_legalization](https://bit.ly/VILNIUSTECH_documents_legalization)

## REGISTER BEFORE COMING TO LITHUANIA

Fill in the Mandatory arriving registration form: <https://bit.ly/3MGGUv9>

Registration is required only after you have received your TRP card and know the exact day of your arrival.

## DORMITORY RESERVATION

Make a **reservation** for a dormitory room and **deposit payment** if you wish to stay on campus. The reservation can be made via **mano.VILNIUSTECH** account. Choose: **Life in VILNIUS TECH -> Accomodation -> Request a dormitory**. Login details for the **mano.VILNIUSTECH** students' system will be sent out by email in the summer months (July-August), after confirmation of your tuition fee payment. In the field of **"Invoice"** you need to upload **500 Eur** dormitory deposit **money transaction confirmation**. New students without registration, will be not allowed enter the dormitory.

## MEET YOUR MENTOR

We have created the Mentor Program to help you integrate into life at VILNIUS TECH easily. Your mentor will provide you with insights, directions, practical advice, and support.

Fill in the Mentor Request form: <https://bit.ly/mentor-request-form>

Please note: Mentors are fellow students, and they work voluntarily. During the summer, they are not on duty and will be available to assist you just before the start of the studies. If you want to contact the mentors' manager, please write an email: [mentor.of.mentores@gmail.com](mailto:mentor.of.mentores@gmail.com)

# VIZA and TRP

The procedure for issuing national visas has changed. From 1st of July, 2023 National visas D are no longer issued to full-time students arriving to study in registered and operating higher education institutions in the Republic of Lithuania.

Foreigners who wish to legally arrive and study in Lithuania as a full time student have to apply for a **Temporary Residence Permit (TRP)** instead of a national D visa.

TRP can be obtained at 34 VFS Global centers operating in foreign countries. You can find the list and contacts here: [https://bit.ly/VFS\\_GLOBAL](https://bit.ly/VFS_GLOBAL)

## Steps how to apply for TRP:

<https://www.migracija.lt/> -> For Foreigners -> To get an electronic service, choose your citizenship -> I want to get a residence permit in Lithuania -> I want to receive temporary residence permit -> Studies -> I am a student -> Apply for a permit

More information about TRP: <https://www.migracija.lt/esu-studentas1>

To apply for **TRP** you have to complete an application form online at the Lithuanian Migration Information System MIGRIS <https://www.migracija.lt> and upload the following documents:

- Valid Travel document (passport);
- Documents confirming the ground for issuance of TRP (e.g., valid visa, acceptance letter);
- Proof of means of subsistence for one year: total **6468.00 EUR** (at least **462.00 EUR** per month and another **924.00 EUR** as a guarantee that he will have enough funds to return to his country of origin) in your or parents bank account (minimum last **3** months original bank account statements/pay slips, etc.; in case of sponsorship - Affidavit of Sponsorship from parents/relatives and their bank account statements for minimum **3** months);
- International travel health insurance covering **one year** of staying abroad (Minimum coverage **30000.00 EUR**).
- Document concerning the place of residence in the Republic of Lithuania;
- Commitment to declare the place of residence;
- Certificate of Non-Criminal Record/Police Clearance certificate. NOTE: it is valid for **6** months.;
- Mediation Letter Number provided by VILNIUS TECH International Studies Centre;
- State fee in the amount of **120.00 EUR** / **240.00 EUR** (in urgent order) + documents shipping fee.
- Note: Documents (Original High School / Bachelor / Master's degree diploma and its supplement (Transcript of Records / Mark sheet / Police Clearance Certificate) must be provided original and translated into English, certified by a Notary, and approved by an Apostille (for citizens of countries acceding to the 1961 Hague Convention).

## IMPORTANT

Details of the procedure for application for the TRP might be changed by the time you decide to visit the country, therefore we suggest you to check the procedures before the arrival:

- Ministry of Foreign Affairs of the Republic of Lithuania: <https://urm.lt/default/en/>
- Migration Department of the Republic of Lithuania: <https://migracija.lrv.lt/en/>

It is the responsibility of individual students to present all required documents in a timely manner at the Migration Department to maintain a valid and legitimate TRP status throughout their study period at VILNIUS TECH.

Note: The Lithuanian officers of the Migration department and VFS Global reserves the right to ask for additional documents.



# TRAVELING TO LITHUANIA

## Where is Lithuania located?

The lyrics of one of our songs say it's in the middle of Europe – and indeed, those are not just song lyrics. Using the method of gravitational centers, researchers at the National Institute of Geographic and Forest Information in France established that the geographical center of Europe is in fact found in Lithuania :)

The nation is only a few hours by plane from other European capitals and can also easily be reached by coach, train or even boat. So welcome to this country of Northern Europe, to the very center of Europe... to Lithuania!

## Travelling by plane

There are international airports in [Vilnius](#), [Kaunas](#) and [Palanga](#). They are offering a wide range of flights and are expanding their destinations every year. There are buses that constantly commute between the airports (including [Riga airport](#)).

## Travelling by train

The railway system in Lithuania belongs to the company [Lietuvos Geležinkeliai \(Lithuanian Railways\)](#). You can enter the country on international routes from Moscow, Minsk, Mahilyow, Warsaw and Saint Petersburg. Trains also run from Königsberg through Lithuania to some cities in Russia and Ukraine.

## Travelling by bus

It is slow but comfortable. You can travel to Lithuania by bus from almost any European country. You can buy a ticket via the internet or at an international ticket office. Although the trip is longer, bus travel has its advantages; you can enjoy wonderful views through the window and there is virtually no limit on luggage weight.

## Travelling by ferry

Sea ferries on six routes connect the largest seaport of Lithuania, Klaipeda, to ports in Sweden, Denmark, Germany and Poland ([www.dfdsseaways.lt](http://www.dfdsseaways.lt), [www.scandlines.lt](http://www.scandlines.lt)). Within the country, ferries connect Klaipeda to the Curonian Spit (Smiltynė: [www.keltas.lt](http://www.keltas.lt)).

## Travelling by car

Lithuania has well maintained roads and reliable highway connections between major cities. Note: Valid car and health insurance are required to drive in Lithuania.

## TAKE NOTE :

- You must bring the [Non conviction/Police clearance certificate](#) (PCC) for the Temporary Residence Permit (TRP) application.
- This certificate must be issued from your previous country of residence (in the last two years).
- Certificate must be legalized with an Apostille or double legalized in the Ministry of Foreign Affairs and translated to Lithuanian language.
- You can translate PCC to Lithuanian in your country or translate to English and here translate to Lithuanian.

## WHEN YOU ARRIVE

### How to reach Student's dormitory

VILNIUS TECH international students' dormitory is situated in the University campus. You can reach it easily by taxi or public transportation (bus stop „Senoji plytinė“).

Address: Students' hostel No 1, Saulėtekio al. 25, Vilnius

Administrator: Vytas Pajenčkovskis

[vytas.pajenckovskis@vilniustech.lt](mailto:vytas.pajenckovskis@vilniustech.lt)

Phone +370 5 2 745 081.

Reception: phone + 370 5 269 8827

If you have been accepted to live in the dormitory you have to go to the reception to register your arrival and you will get your room key. Next working day you have to visit the administrator of the hostel to sign the agreement.

You will need to pay a 300 EUR deposit before your arrival. Cash payments are not acceptable. If you do not cause any damage, the deposit will be refunded upon departure.

### How to reach University campus and the office of International Studies Centre

Universities' main building and International Studies Centre office is located at Saulėtekio al. 11 (bus stop „Gedimino technikos universitetas“).

You will need to visit us after you have settled in the dormitory, starting from the 2nd of September. Please book an appointment in advance so that we can prepare to meet and greet you! Registration link: <https://calendly.com/vilniustech/10min>

**TAKE NOTE:** Don't forget to bring your original graduation documents with transcripts, passport, TRP card, Police Clearance Certificate (PCC) upon arrival to our office.

## VILNIUS TECH student account

An account in internal University system will be created for you. You will be able to access your account from the middle of August on: <https://mano.vilniustech.lt>

There you will find your student email, main study programme, lectures timetable and other important information. You will get your login and password details with the welcome email before the Orientation days.

## WI-FI access on campus

You will get login and password with the welcome email before arrival.

## Lectures timetables

For your full time study programme you will find your lectures timetable on your personal account at <https://mano.vilniustech.lt/>

You will have to enter your student number and password (the same as for the Wi-fi).

## Opening a bank account

The currency of Lithuania is the **EURO (EUR)**.

Once you are in Lithuania you will have to open a bank account at one of the banks located in Lithuania. You can apply to any bank you want (like [Šiaulių Bankas](#), [Swedbank](#), [SEB](#), [Luminor](#), etc.), all banks have representatives who speak English). Before you go to the bank, please take a document from International Studies Centre that you are a student of **VILNIUS TECH**.

You can use online banks like [Revolut](#) and [Paysera](#) as well.

## Student card (ISIC)

To make your student life easier and to get all the discounts for students you will have to register for International Student Identity Card (ISIC).

For getting an ISIC, you will need to present identity document, photo, and confirmation document from Vilnius Tech International Studies Centre.

Cost of regular ISIC card without integrated public transport e-ticket is **12.00 EUR** per study year. Cost of ISIC card with integrated Vilnius city public transport e-ticket (2 cards in 1 card!) – **13.00 EUR**.

## Student discounts

Students in Lithuania receive discounts in various places from restaurants to museums, from public transportation to certain shops. In order to use ALL discounts, you will need to have International **Student Identity Card (ISIC)**.

ISIC is recognized all around the world and it is a must if you plan to travel abroad. You can order your ISIC card for the new academic year ONLINE! The order is made by using the following link: <https://isic.lt/en/erasmus>

## Health insurance

If you are a citizen of one of the [Member States of the European Union](#), Iceland, Liechtenstein, Norway or Switzerland and have a [European Health Insurance Card](#), you are guaranteed state health care services in the case of an accident. You need to be aware that the card does not cover the expenses of health care services provided by the private sector.

If you are a citizen of a country outside the European Union, you must contact one of the insurance companies on [Lithuanian Insurers Association \(LDA\)](#). In order to study in Lithuania you must have a valid health insurance covering the duration of your stay.

## Emergency number

In case of an accident or real threat to your health or property, immediately call the [Emergency Call Number - 112](#).

## Mobile service providers

There are three basic service providers of mobile connectivity: [Telia](#), [Bitė](#), and [Tele2](#).

You can get the prepaid cards ([Extra, Ežys](#) (Telia), [Labas](#) (Bitė) or [Pildyk](#)

(Tele2)) at all newsagents or designated trading places. Each of them offers different tariffs and terms, so you will be able to choose one which is meeting your needs the best.

For calling to Lithuania from a foreign country, first you need to dial an International Direct Dial (IDD) code (which is the exit code and is different for different country), the code of the country [ **+370** ] and then the code of the city and phone number:

- Landline: IDD/+ **370** (Country Code) + Area Code + Recipient's Number
- Cellular: IDD/+ **370** (Country Code) + Eight Digits Cellular Number

E.g. to call from landline outside Lithuania to landline phone in Vilnius would be **IDD3705xxxxxxx**, from cellular to cellular: **+3706xxxxxxx**.

If you are calling from Lithuania to another ordinary number in another city of Lithuania, dial **8**, then the city code and the required phone number. For an international call from Lithuania, first dial **00** (**00** if calling from a number in any European country; if dialing from a mobile phone, you can enter a "+" instead of the "00"), then dial the code of the country, city code and phone number.



## TRANSPORTATION IN VILNIUS

Vilnius has a well-developed system of public transport. There is a choice of buses and trolleybuses.

You have to get a Vilniečio card and put your tickets in there. Students get half price for single tickets and 80% discount on monthly-unlimited tickets.

Information on routes and schedules (available in English) is available on the public transport website [www.vilniustransport.lt](http://www.vilniustransport.lt) or an app [Trafi](#).

If you want to take a taxi, there are various apps to choose from ([Uber](#), [Taxify](#), [Etransport](#), etc.). By using the app, you will feel safer than sitting in the random car on the street. Moreover, you will be able to see how much approximately it will cost you. Usually a taxi ordered by phone or app is cheaper than the random car that was taken on the street.

## WEATHER AND CLOTHING

Don't forget that you are coming to a country where the weather in all four seasons is very different. [Lithuanias climate](#) has gotten warmer in recent years; the average annual temperature is  $6.5-7.9^{\circ}\text{C}$ . July is the hottest month of the year (average temperature is about  $19.7^{\circ}\text{C}$ ; the highest temperature is over  $30^{\circ}\text{C}$ ). The coldest month is January (average temperature  $-2.9^{\circ}\text{C}$ , lowest temperature may fall below  $-30^{\circ}\text{C}$ ). For the coldest months we suggest to have some [winter clothing](#).

## FOOD AND SHOPS

Although Lithuania does not have a huge population, it has a large number of supermarkets. They are modern in every respect and you will not only be able to do all your shopping, but also have lunch, meet friends, go to the cinema or have a relaxing massage. If you like cooking, you'll be able to buy food and drinks in the large supermarkets Maxima, Rimi and Iki or you could look for it in the smaller more specialized shops.

- In most places in Lithuania you can drink tap water without any fear or you can buy Mineral water in the shops, cafés, and restaurants.
- You can buy food every day from 8 am until 10 pm. There are few stores in Vilnius working 24/7 (e.g. so called [Mindaugo Maxima](#)).
- There are quite a lot of shops in Vilnius. Probably the most popular and biggest [shopping centers](#) are Akropolis, Panorama, Europa, Ozas, and Outlet Park.
- [Lithuanian cuisine](#) consists of a lot of potatoes, soups and meat. Probably the most traditional dishes are Cepelinai (Zeppelins - a potato-based dumpling), Šaltibarščiai (cold beetroot soup), Potato pancakes, Kugelis (a cake of potatoes), Kepta duona (fried bread), Kibinai, Šakotis (traditional Lithuanian cake).
- By law, shops are prohibited from selling alcohol from 8 pm until 10 am from Monday to Saturday, on Sundays the alcohol is being sold only from 10 am to 3 pm (the exceptions are bars, cafés and restaurants). [The legal drinking age](#) in Lithuania is 20.
- Smoking is prohibited in restaurants, cafés, bars, bus stops and other public premises unless they are equipped with special places for smoking (the smoking area is inside in most night clubs).

## WORK IN LITHUANIA

International students have the right to work while studying in Lithuania as long as they are enrolled in a university. International students from EU and non EU countries can work up to **40** hours per week after obtaining the Temporary Residence Permit (TRP).

International students have a possibility to stay in the country for **15** months afterwards to look for a job:

- During the last year of studying apply for a temporary residence permit renewal for **3** additional months from the day when studies are finished.
- After graduating, you also have the possibility to apply for a temporary residence permit for **12** months for job search and self-employment purposes.

More information: <https://workinlithuania.lt/>

## LITHUANIAN LANGUAGE

Over **80%** of Lithuanians consider the Lithuanian language to be their mother tongue. Lithuanian is one of the oldest languages alive, originating from the Baltic branch of Indo-European languages along with German, Roman and Slavic languages. Lithuanian also retains the nominal morphology found in Sanskrit and Latin. Lithuanian utilizes an adapted version of the Roman alphabet allowing foreigners to easily read text.

Although most Lithuanians are fluent in English, it is less common outside of large cities. It is always useful to know key phrases, so here is an introductory lesson.

More about the Lithuanian language in Wikipedia:

- [https://en.wikipedia.org/wiki/Lithuanian\\_language](https://en.wikipedia.org/wiki/Lithuanian_language)

The Sound of the Lithuanian language (Numbers, Greetings, Words):

- <https://www.youtube.com/watch?v=cc1H4NwxnUU>



# DO's and DON'Ts

Every country has its own customs and practices and Lithuania is no exception. So, if you don't want to feel weird, you must anticipate things that cannot be found in travel guides.

Here are some tips on what may be done in Lithuania and what is considered as taboo.

## DO:

- Always mark your ticket on a bus or trolleybus, as the controllers are not always amenable.
- Leave tips: if you receive good service, the usual practice is to give at least ten percent of the total bill.
- Be punctual for appointments as Lithuanians tend to value each other's time.
- Have a valid ID/ISIC with yourself if you are buying alcohol or tobacco products. If the seller will have any doubts if you have legal age for buy these goods, he/she might ask to show your document.

## DON'T:

- Do not consume alcohol in parks, squares and other public places – it is prohibited by law.
- Do not litter out of the car windows or in public places, you might get fined!
- Do not get into a waiting taxi; if you call it by phone, it will take you to your destination at a lower rate.

## SOME OTHER USEFUL LINKS:

- Lithuanian Tourism Info: <http://www.lithuania.travel/en>
- Vilnius Tourism Information Centre: <http://www.govilnius.lt/>
- Migration Department: <http://www.migracija.lt/>
- Maps of Lithuania: <http://www.maps.lt/>
- Lithuanian Central Internet Gates: <http://lietuva.lt/en/>
- 

Hope this short info sheet will help you to prepare for your next stage in your life – Studies at **VILNIUS TECH**.

See you soon!

**VILNIUS TECH International Studies Centre**

Contact us:

phone +370 5 274 48 97, e-mail: [admissions@vilniustech.lt](mailto:admissions@vilniustech.lt)

# Information for admitted students

Book your **ISIC Student's card** online:  
<https://www.isic.lt/en/erasmus>

Or you can go directly to ISIC office by address:  
**Zigzag Travel**  
Jono Basanavičiaus st. 30, LT-03224 Vilnius

You have to get a Vilniečio card and put your tickets in there. Students get half price for single tickets and **80%** discount on monthly-unlimited tickets.

You can order ISIC with an integrated Vilnius public transport e-ticket as well.

Information on routes and schedules is available on the public transport website [www.judu.lt](http://www.judu.lt) or an app **Trafi**.

If you want to take a taxi, there are various apps to choose from (**Uber, Taxify, Etransport, etc.**)

By using the app, you will feel safer than sitting in the random car on the street. Moreover, you will be able to see how much approximately it will cost you. Usually a taxi ordered by phone or app is cheaper than the random car that was taken on the street.



**Trafi** I >>

**UBER**  
**TAXI**  
**Bolt**  
**E TRANSPORT.LT**



## Opening a bank account

Once you are in Lithuania you will have to open a bank account at one of the banks located in Lithuania. You can apply to any bank you want (Šiaulių Bankas, Swedbank, SEB, Luminor, etc.), all banks have representatives who speak English). You can use online banks like **Revolut** or **Paysera** as well. At least **5** business days before your planned visit to the bank, please write an email to [jurgita.vaitkute@vilniustech.lt](mailto:jurgita.vaitkute@vilniustech.lt) from your **VILNIUS TECH** student mail account and request to take a document from International Studies Centre that you are a student of **VILNIUS TECH**.

**Luminor** ŠIAULIŲ BANKAS | **SEB** Swedbank | **Revolut** | **paysera**

Find your lectures timetable on your personal account at  
<http://mano.vilniustech.lt/>



You have to enter your student number and password (same as for the Wi-fi).

## Tuition fee payment information

The tuition fee shall be paid:

- For Autumn semester until **30th of September**
- For Spring semester until **28th of February**

The full tuition fee shall be paid to universities bank account:

### \*From Abroad\*

To whom: Vilnius Gediminas Technical University  
Account No: **LT767044060000317763**  
Bank's name: SEB Bankas AB, Vilnius  
SWIFT: CBVI LT 2X

Note: Full name of the student and student ID number should be indicated in the payment details.

### \*From Lithuania\*

To whom: Vilnius Gediminas Technical University  
Account No: **LT397044060000317750**  
Bank's name: SEB Bankas AB, Vilnius  
Payment code: **2394**

Note: Full name of the student and student ID number should be indicated in the payment details.

Any questions about university payments should be send to Ina Gujienė by email:  
[ina.gujiene@vilniustech.lt](mailto:ina.gujiene@vilniustech.lt)